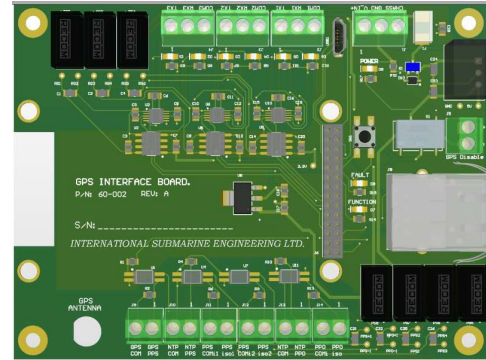


Description/Features

The device operates as both a GPS receiver carrier board as well as a PPS output. It has one isolated PPS output, three configurable electrically isolated RS232 outputs and one generic TTL level isolator.

The ISE GPS interface board is used with Trimble MB-Two 106960-02 or BD9250. Once running, the user can use the web server to monitor the status of the device and the number of satellites being tracked.



Trimble GPS Receiver Module

The Trimble GPS receiver module is a board level GPS receiver and processor that has a single GPS, Dual GPS and RTK capabilities. It also has heading, pitch and roll processing depending on the features and configurations used.

Specifications¹

Mechanical

Board Size (L x W x H): 4.0" x 3.0" x 0.75"

Weight: 110g

Power Requirements

Voltage: 9 to 28 VDC

Current (@12VDC): 260 mA

Fuse: Littelfuse Nano2 Slo-blo [454002.0]

Environmental

Operating Temperature: -20 - +60°C

Storage Temperature: -40 - +85°C

¹ Weight and Power including mounted Trimble BD9250